



**KRISHNA AVANTI**  
PRIMARY SCHOOL





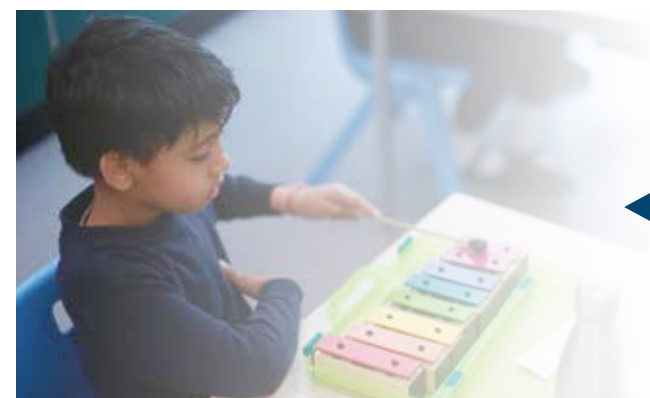
◀ **4** Welcome

**6** Core principles ▶



◀ **8** Our commitment to parents, carers and students

**10** Tour of the school ▶



◀ **12** Learning and teaching



◀ **15** Curriculum

**16** Uniform ▶



◀ **18** School lunches

**20** Life at Avanti ▶



◀ **31** Admissions



# Krishna Avanti Primary School, Leicester



## Welcome to Krishna Avanti Primary School Leicester (KAPSL)

Hare Krishna!

I would like to extend a very warm welcome to you on behalf of the Avanti Schools Trust, staff, and students. I am honoured and humbled to have the opportunity to lead alongside a dedicated team at a school full of rich and spiritual traditions; a school that exists to help each person become a well-rounded human being through intellectual, moral, and spiritual growth, and so make the world a better place.

Taking inspiration from Sri Krishna Chaitanya's teachings, our ethos reflects His all-encompassing philosophy of education and spirituality, which promotes humility, equality for every individual, love, and compassion that transcends all ideologies and beliefs.

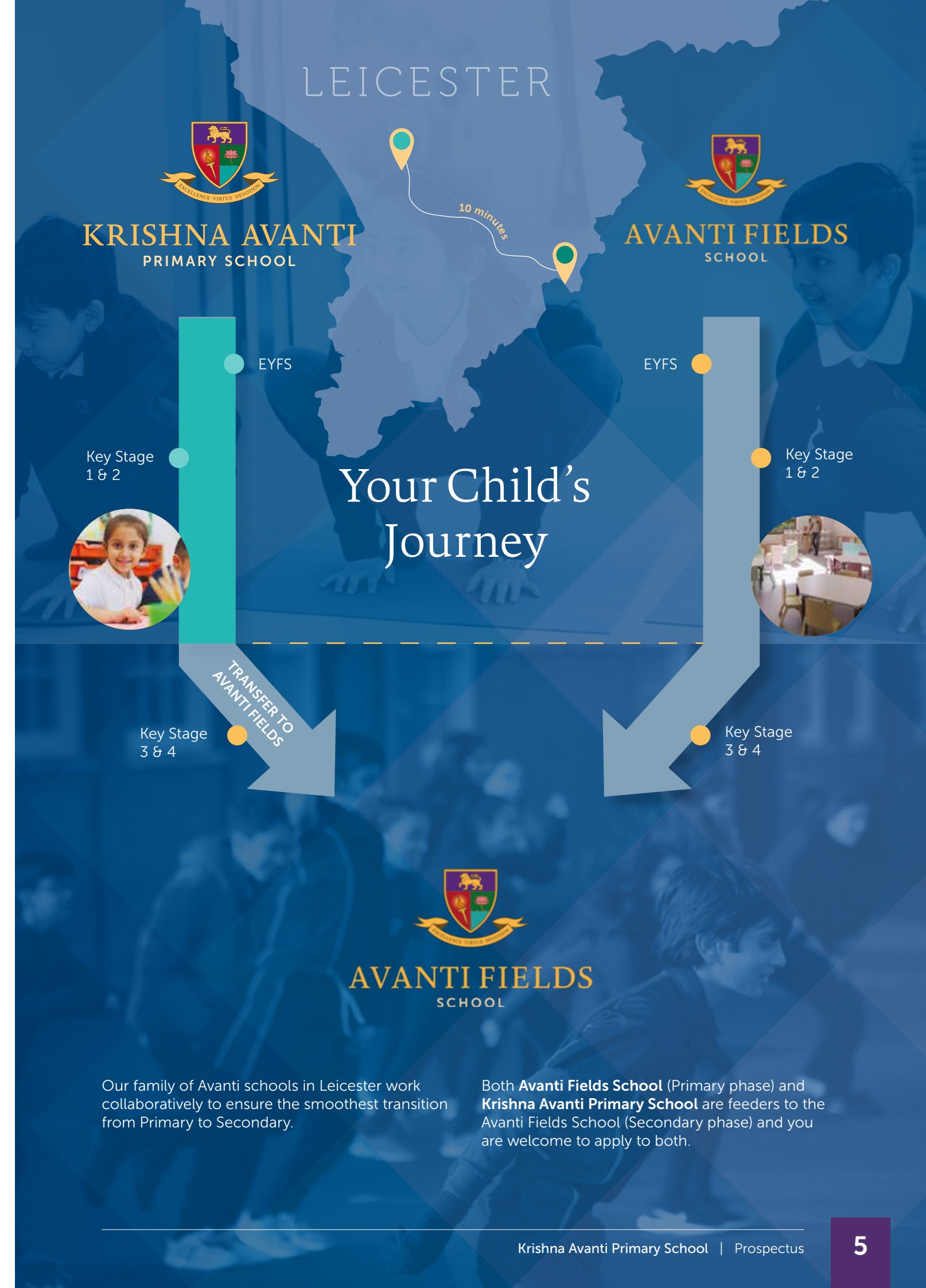
At Krishna Avanti Primary School, we strive to foster a genuine passion for learning in each student that exceeds the classroom and into the rest of their lives. I am enthusiastic to work with a great community where we can share our faith, instil virtues, and empower our students to seek their full potential supporting each person's life journey along the three parallel paths: Educational excellence; Character formation; and Spiritual insight.

I believe that excellent schools are a result of amazing teachers, staff, parents, and community members. It is my goal to help grow our purposeful community through collective efficacy, communication, professional development, and collaboration with all stakeholders to continue to build and foster the tremendous culture embedded at Krishna Avanti Primary School.

I would love for you to part of our journey and look forward to meeting you.

Sincerely,

**Ms Devika Bridgmohun**  
Principal



Our family of Avanti schools in Leicester work collaboratively to ensure the smoothest transition from Primary to Secondary.

Both **Avanti Fields School** (Primary phase) and **Krishna Avanti Primary School** are feeders to the Avanti Fields School (Secondary phase) and you are welcome to apply to both.

# Core principles

 <p>We have incredible potential and can achieve this when nurturing all parts of ourselves – intellectual, emotional, physical and spiritual.</p> <p>1</p>	 <p>We choose how we wish to respond to life and what we nurture within.</p> <p>2</p>	 <p>We care for and respect all life – human, animal and plant – and live in a way that causes the least possible harm.</p> <p>3</p>
 <p>We each observe the one same reality from our own unique perspective and engage in open-minded dialogue to deeply enrich our vision.</p> <p>4</p>	 <p>We serve a higher purpose by living a meaningful and satisfying life of contribution.</p> <p>5</p>	 <p>We are nourished by personal relationships that fulfil our need to love and be loved, encouraging us to be the best we can be.</p> <p>6</p>

# The three pillars

Our school prepares students for their respective life-journeys by promoting educational excellence, character formation and spiritual insight.



## Educational excellence

Our vision for educational excellence is one where deeply inspired teachers nurture joyful students and nourish their innate passion for learning. Learning is a quest to discover each student's unique gifts and potential and lay the foundation for their lifelong journey of learning. This is inseparable from high academic standards, where a challenging holistic curriculum cultivates independently thoughtful and reflective students by working towards a sense of mastery, emphasising depth, and not just breadth.



## Character formation

Our vision for character formation is one where virtues are taught by example and a supportive community of learners fosters a powerful sense of individual and collective purpose. Learning develops for these conscious changemakers as a quest for making the world a better place, starting with oneself. The capacity to internalise and put into practice what we have learned is the true test of learning. Building this capacity demands an experiential, virtues-led curriculum that embraces collaboration, custodianship and global perspectives.



## Spiritual insight

Our vision for spiritual insight is one where our interconnectedness with all living beings and with the universe, urges acts born out of humility and love, and the Self is perceived beyond its layers of coverings. Learning blossoms for these seekers as a quest for self-discovery and opens the door to their unlimited potential; an antidote to the emptiness of a materialistic or mechanistic world view. The curriculum unveils the possibilities of sacredness and transcendence at every moment and so engenders a deeply positive attitude to life, enduring happiness and heartfelt relationships.



# Our commitment to parents, carers and students

We want to involve you as parents and carers fully in your child's education. By working closely with you we can ensure that each stage of your child's journey is stimulating, positive and enriching.

We will provide:

- The very best teaching in every subject and every classroom;
- A rigorous curriculum that challenges and stretches every student to be the best that they can be;
- A regular and robust assessment and reporting system that clearly informs you about your child's progress;
- An enrichment programme that includes academic, sport and music related activities;
- A wide range of local, national and international educational visits;
- Clear and precise feedback that enables every student to master key skills and build their understanding;
- Opportunities to contribute to the life of the school and develop their leadership skills;
- A safe learning environment in which your child can flourish and be happy





# Tour of the school



## Reception

Welcome to our school. In Reception a member of staff is always ready and willing to help and serve our community.



## Temple

The heart of our school. Our Lords, Krishna and Balarama can be found inside our Main Hall where all our congregational activities take place.



## Classrooms

Each room boasts its own unique architecture whilst keeping to the uniformed AGS classroom layout. Newly decorated with interactive whiteboards, each room has abundant facilities for pupils to access independently to aid their learning.



## Studio

An action-packed space with plenty of room for all pupils to develop their strength, team work and sporting skills, so that they can thrive in the world of sport.



## Outdoor play area

Equipped with a basketball court, badminton nets, and fully kitted with the latest sports equipment, this is an action-packed space with room to jump and spin until your heart is content.



## Yoga Studio

A room furnished for learners to find their inner calm and enjoy a different pace of school life.



## Main hall

The main hall has been our stage for many assemblies and works of art, which have been performed by many adults and pupils enabling them to develop their individual talents.

The main hall also doubles as a dedicated lunch area which allows our pupils to enjoy nutritionally balanced and delicious vegetarian meals prepared and served with love.





# The Avanti approach to Learning and Teaching

Learning and teaching in all Avanti Schools is underpinned by the Avanti Teacher Toolkit. Our teachers and teaching assistants are guided by the 12 Avanti Habits, rooted in cognitive science and evidence-informed practice. All our teachers are continuously developing their practice through exceptional professional development from the Avanti Institute, ensuring that our pupils benefit from the highest quality teaching in every lesson.

## 12 elements of great learning and teaching in Avanti Trust Schools

Through a planned programme of training and development supported by The Avanti Institute, we ensure that all Avanti Trust Schools have a highly developed sense of what constitutes great teaching. We continuously train and coach our staff on every feature of high quality pedagogy, in order that every student gets an education that is second-to-none.



We ensure that all our teachers:

1. Build positive relationships with pupils and each other
2. Begin and end lessons calmly with familiar routines
3. Use intentional seating and classroom set up
4. Create a flourishing learning environment by managing behaviour effectively
5. Have clear and ambitious learning intentions for all pupils
6. Are always context considerate and adapt practice appropriately
7. Activate daily review of prior learning
8. Present new material in small steps
9. Provide modelling and scaffolding
10. Give opportunities for guided and independent practice
11. Ask effective questions and check for pupil understanding
12. Review learning regularly before moving on to new content



“Plan activities that will enable students to demonstrate understanding and master skills.”





# Curriculum

## Early Years Foundation Stage

At Krishna Avanti Primary School, we want our students' first experiences of education to be enjoyable and engaging. We expect all members of the school community to work collaboratively, with high aspirations and expectations of everyone, consistent with our ethos.

By the end of the Foundation Stage (Reception Class), we aim for all our children to have developed positive attitudes to school supported by positive relationships with adults, strong friendships, meaningful learning activities set in an engaging, calm environment and strong links between school and parents/carers. We also expect them to have a firm understanding of phonics, and will offer additional directed support to those with need.

Children will be offered a broad, balanced Early Years Foundation Stage curriculum. This allows plenty of opportunities to learn through play in a wide variety of contexts and focuses on: communication and language; physical development; personal, social and emotional development; literacy; mathematics; understanding the world; and expressive arts and design. Teaching will encourage all children to ask questions and talk about their play and learning.

## Key Stage 1 and 2 (Age 5-11)

Krishna Avanti Primary School offers a unique curriculum, which is developing at pace. We currently teach all the subjects in the National Curriculum i.e: English, Maths, Science, Computing, Design & Technology, History, Geography, Music, Art, Personal, Social Health Education (PSHE) and Citizenship, Physical Education and Spanish.

We pride ourselves on our unique offer of Philosophy, Religion and Ethics. We also have a number of visiting specialists who support learning and the development of innovative practice in ICT, Expressive Arts, PE and Yoga.

We encourage our children to experience learning outside of the classroom setting and often extend their learning opportunities by taking the children out on extra-curricular visits to different places of interest, in order to reinforce their learning and encourage further engagement in particular topics, themes or subject knowledge.





# Uniform

Uniform and achievement have always been a high priority for the Avanti Schools Trust. We believe the way in which students wear their school uniform reflects the importance which is placed on attention to detail and pride in the school. The smart appearance of our students has been appreciated by parents of prospective students and visitors to our schools. For more information about the school's uniform requirements please visit our website.





# School lunches

An important part of our ethos is around the provision of hot, fresh, nutritious meals. Sharing tasty, healthy school lunches is an integral part of the educational experience at an Avanti school. It's also an opportunity to enhance social skills and table etiquette, ensuring lunchtimes are a positive experience for all. School staff often enjoy taking lunch with pupils, creating a family atmosphere.

The lunch meals cooked on-site are vegetarian (in line with the faith ethos of the school) and half-termly menus are also available on the School's website. We encourage parents to visit the school to sample the school lunches in order to satisfy themselves with the quality of provision.

All children at Krishna Avanti Primary School must have a school lunch - packed lunches are not an option. Meals can be designed to meet the needs of children with specific allergies.

If the lunch provision on offer does not meet your child's needs, or if your child has specific diet requirements/preferences, please do speak to Govinda's (our catering provider) so that they can provide for your child accordingly.

We strongly encourage parents who have financial constraints to apply for Free School Meals. An application form can be obtained from the school office. Any forms received by the school will be kept confidential.





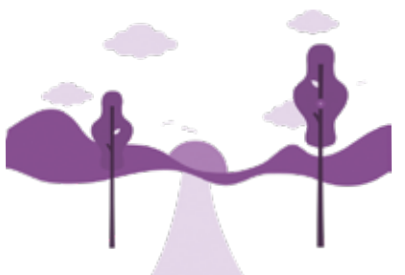


# Life at Avanti



## Wellbeing wisdom

Avanti staff have access to regular wellbeing sessions. Our previous sessions have been led by medical professionals, corporate coaches and even monks! We discuss everything from how to overcome stress to learning about meditation.



## Retreats

Staff and upper KS2 students will have an opportunity to go to annual off-site Quest! These are fantastic retreats allowing; individuals to nurture and develop more friendships, engage in fulfilling activities whilst going out of their comfort zone, improve overall wellbeing and reconnect with nature.



## Wide, rigorous and unique curriculum offer

Our schools offer a dynamic classroom approach in which students actively explore real-world problems and challenges and acquire a deeper knowledge. Students at all ages engage in projects, from studying the environment to social experiments to working on scientific innovations.



## Yoga

Every student has access to Yoga and Mindfulness sessions ranging from 20 minutes to 1 hour a week. Yoga and Mindfulness help ground students, relieve stress and improve their overall health and wellbeing.



## Fresh vegetarian meals

We believe a healthy gut is the basis of a healthy life, and that's why it's so important to us that we only use the freshest ingredients when preparing our tasty, nutritious vegetarian meals available for all children.



## Avanti Nights

Avanti hosts regular events called "Avanti Nights" for parents and the wider community. This is a series of events focused around wellbeing and development for parents in their personal and family lives.





# Avanti Schools Trust

Avanti Schools are based across the country. The idea for Avanti began in 2003 and our first school was opened in 2008. Our vision was for a family of schools based upon our core principles of educational excellence, character formation, and spiritual insight. We now have over 5000 students and 600 members of staff across our family of 12 schools.

Avanti has a proven approach to school development and improvement, with excellent pupil outcomes across our schools for example our primary school outcomes are amongst the top 10% in the country at Key Stage 2.





# Reviews from parents and guests

"Being at Avanti makes work so enjoyable and a place that I look forward to going to work everyday. The environment is perfect not only for academics but for spiritual insight."

**Teacher**  
at Avanti

"The school is wonderful and a real testimony to all of your hard work, effort and especially the genuinely positive and meaningful relationships which were evident and visible whilst walking around your school. It was a real pleasure to be able to visit and see all the wonderful things happening at KAPS Leicester."

**Visitor**  
to KAPSL

"Thank you for welcoming me to the school today. It has been inspiring to meet staff and students so engaged in learning. My congratulations to everyone involved in the conception and opening of this splendid premises."

**Damian Hinds**  
Former Secretary  
of State for Education

"The provision for pupils' spiritual, moral, social and cultural development is exceptional."

School leaders and governors, through the Avanti Trust, are wholly committed to ambitious outcomes for all pupils."

**Ofsted**

"The school is a place I can happily call my second home. The environment captures all aspects of a quality education where everyone aspires to be the best versions of themselves and exceed their expectations. I couldn't image a friendlier, more pleasant and safer place to be inspired to learn in."

**Student**  
Avanti School

"Thank you so much for the splendid tour. You must be immensely proud of all that you are achieving. The children and staff team all seem so happy. Once again, many thanks to all who are involved in my child's formation. She is extremely fortunate to be at Krishna Avanti"

**Parent**  
of child at KAPSL

"I feel the school has done really well at responding to make sure the children are engaged and learning from home or in school. Providing live lessons is invaluable and has helped enormously. Many other schools have not got this far in interacting with the children at home. I feel you guys have gone over and above to make sure the children have kept continuity as best as possible."

**Parent**  
of child at KAPSL

"The school's ethos and collective worship are just some of the things that make the school stand out from other schools. Its ethos disciplines us and helps us to build our character so we can learn and become better people - not only at school but also at home. Collective worship unites the whole school, encouraging us to feel like many individuals part of one big family."

**Student**  
Avanti School



# Next Step on the Journey

## Secondary curriculum

Continuing the Avanti journey, Krishna Avanti Primary School children have the privilege of a streamlined path to Avanti Fields Secondary School.

All students will have access to a broad and balanced curriculum, which alongside our extra-curricular programme, will enable each child to find and nurture their individual talents.

For the first three years (7, 8 and 9) students will follow a broad and challenging academic curriculum. This includes the following subjects:

- English
- Mathematics
- Science
- Geography
- History
- PRE
- PE and Yoga
- A modern foreign language
- Drama
- Computer Science
- Design & Technology
- Art
- Music

However, we believe that building firm foundations in English and Mathematics enable students to thrive in all their subjects and their adult life. To facilitate this, we offer extra time for English and mathematics in order that our students master their literacy and numeracy skills and are therefore able to choose and succeed in the very best GCSE subjects at Key Stage 4 (Year's 10 and 11).

As students move into Key Stage 4, they will take options in regards to the subjects they would like to pursue and this typically leads to students studying between eight to ten GCSEs.







# Personal development

## Enrichment

Enrichment is a key part of students' learning and personal development at Avanti Fields School. We host a range of opportunities for students to engage further with their academic learning and to develop key character formation qualities through a range of events, visits, extra-curricular and super curricular activities.

The Avanti Field School's careers curriculum follows the statutory guidance set out by the DFE and aligns with the Avanti vision to help each person become a well-rounded human being through intellectual, moral and spiritual growth, and so make the world a better place.

## Student leadership


There are many opportunities for our students to develop their leadership skills at Avanti Fields School, both within curriculum areas and our extra-curricular provision. We aim to provide opportunities for our students to develop leadership skills by succeeding together as a community through a shared vision and our ethos, using student voice to make our school the best it can be. Student leadership is continually evolving as students take on more leadership roles and is ever expanding. Examples of student leadership roles include:

- Student council
- Prefects
- Friendly faces
- Subject Leaders

## Careers

Our careers programme is aspirational in both its design and its holistic approach, which ensures all students are supported to develop, embody and put into practice the essential workplace qualities and skills, as defined by the 'Avanti Fields qualities wheel' and learner descriptors. It is through this strategic academic, experience and holistic approach that we aim to support all our students in their quest to embrace and fulfil all opportunities open to them in the world of work.



A background image showing three young children dressed as astronauts in red and white suits. They are standing in front of a dark backdrop with gold stars and the word 'INFINITE' in large, stylized letters. The child on the left is a girl with glasses, the middle one is a boy with an open mouth, and the one on the right is another boy.

“The pupils I spoke with said overwhelmingly that they are happy, making good progress and feel safe. One pupil described the school to me as ‘Perfect!’ They are confident that bullying does not occur at Krishna Avanti and that behaviour both inside classrooms and on the playground is good. Pupils relish the wide range of extra-curricular activities that you offer.”

Ofsted

“The early years is a strength. The outdoor and indoor areas are stimulating and have a wide range of learning opportunities for the children to develop their knowledge and skills. When I visited, children were engaged in interesting and well-resourced activities that were well supported by teaching assistants.

Ofsted

## Admissions

SCHOOL ADMISSIONS POLICY

[avanti.org.uk/kapsleicester/admissions](https://avanti.org.uk/kapsleicester/admissions)

APPLY VIA THE LEICESTER COUNCIL ADMISSIONS WEBSITE

[leicester.gov.uk/schools-and-learning/school-and-colleges/school-admissions](https://leicester.gov.uk/schools-and-learning/school-and-colleges/school-admissions)



# A Journey of Self-Discovery

## AVANTI SCHOOLS TRUST

The Trust website is a good starting point to learn about the Avanti vision at play in our schools. Short videos are also online.



[www.avanti.org.uk](http://www.avanti.org.uk)

## HIGHLIGHTS AND UPDATES

The Avanti Life magazine brings you the very best of what is happening within our family of schools. Also available in print.



[www.avanti.life](http://www.avanti.life)

## SCHOOL LIFE IN DETAIL

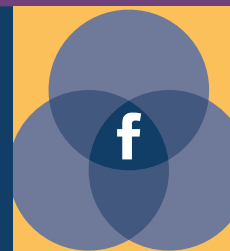
The school website offers up-to-date information on key aspects of school life, from ethos to admissions; school lunches to job opportunities.



[www.avanti.org.uk/kapsleicester](http://www.avanti.org.uk/kapsleicester)

## SOCIALISING

We use Facebook as a shared community page where many school and Trust highlights are broadcast – a great way to stay informed and in touch.



[www.facebook.com/avantischoolstrust](https://www.facebook.com/avantischoolstrust)

## TWITTER

At Krishna Avanti Primary School we use twitter to keep everyone updated about the amazing work our teachers and pupils are doing.



[@KrishnaAvantiPS](https://twitter.com/KrishnaAvantiPS)

## Krishna Avanti Primary School, Leicester

Evington Hall  
Spencefield Lane  
Evington  
Leicester LE5 6HN

Phone: 0116 241 9880

Email: [kapsleicester@avanti.org.uk](mailto:kapsleicester@avanti.org.uk)

Website: [www.avanti.org.uk/kapsleicester](http://www.avanti.org.uk/kapsleicester)



## KRISHNA AVANTI

Excellence · Virtue · Devotion

Krishna Avanti Primary School is part of the Avanti Schools Trust

Avanti Schools Trust is a charitable company limited by guarantee registered in England & Wales

Registered No: 07506598 • Registered Office: Avanti Schools Trust, Wemborough Road, Stanmore, Middlesex, England, HA7 2EQ